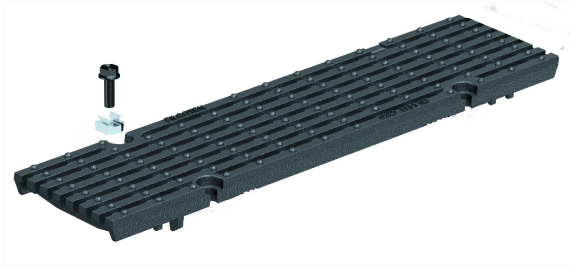


**Ductile iron longitudinal grating**



**Product Features:**

- Certified to EN 1433 Load Class E 600 kN  
134,900 lbs.
- Uses four point bolting system.
- Suitable to use with NW100 channels.
- Manufactured from ductile iron.

**Installation:**

- The trench drain system and grates shall be installed in accordance with the manufacturer's installation instructions and recommendations.

**Gratings FILCOTEN® pro – G 100 (4") 4-point bolting.**

	Item no.	Gratings	Material	Dimension	Load class as per EN-standard	Slot-/Mesh width	Weight		Inlet cross-section sq.inches	Inlet cross-section cm2/m
							Lbs	Kg		
○	17010103	Ductile iron longitudinal grating	ductile iron	19.70"/4.80"/0.78" 500/122/20	E 600 kN	Mesh 0.87" by 0.51" (22x13mm)	9.26	4.2	67.43	435

**Specification:** FILCOTEN pro-G NW100, extra heavy duty, (Load Class E 600 kN), ductile iron, reinforced grate is 4.80" (122mm) wide, 19.70" (500mm) long, 0.78" (20mm) high, weighing 9.26 lbs (4.2 kg). The grate has 0.51" (13mm) wide, 0.87" (22mm) long mesh, and is Class E load rated - commercial solid tire traffic patterns and impacts from steel struts or metal wheels (forklifts). The grate is secured to the body with four point bolting system. Ductile iron manufactured and tested according to EN1433 - CE certified.

E600kN MW22/13: GJS 17010103, 4-point bolting

