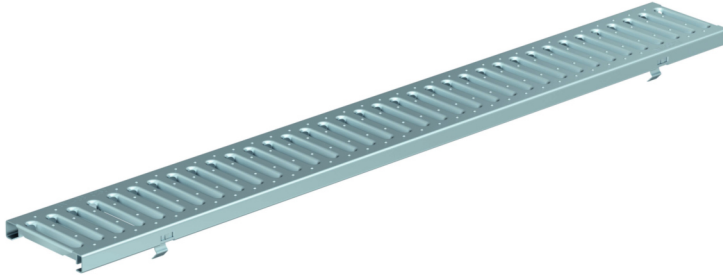


### Reinforced slotted grating - Galvanized steel



#### Product Features:

- Certified to EN 1433 Load Class A 15 kN 3,372 lbs.
- Uses fiX self-locking system.
- Suitable to use with NW100 channels.
- Manufactured from galvanized steel
- Hot-Dip galvanized material.

#### Installation:

- The trench drain system and grates shall be installed in accordance with the manufacturer's installation instructions and recommendations.

#### Gratings FILCOTEN® tec – 100 (4") with fiX self-locking system.

|   | Item no. | Gratings                   | Material         | Dimension                         | Load class as per EN-standard | Slot-/Mesh width                    | Weight |     | Inlet cross-section sq.inches | Inlet cross-section cm2/m |
|---|----------|----------------------------|------------------|-----------------------------------|-------------------------------|-------------------------------------|--------|-----|-------------------------------|---------------------------|
|   |          |                            |                  |                                   |                               |                                     | Lbs    | Kg  |                               |                           |
| ○ | 17010202 | Reinforced slotted grating | galvanized steel | 39.40"/4.80"/0.78"<br>1000/122/20 | A 15 kN                       | .31" wide x 3.15" slots<br>(8x80mm) | 3.31   | 1.5 | 34.88                         | 225                       |
| ○ | 17010203 | Reinforced slotted grating | galvanized steel | 19.70"/4.80"/0.78"<br>500/122/20  | A 15 kN                       | .31" wide x 3.15" slots<br>(8x80mm) | 1.76   | 0.8 | 34.88                         | 225                       |

**Specification:** FILCOTEN pro-tec NW100, light duty, (Load Class A 15 kN), galvanized steel, reinforced grate is 4.80" (122mm) wide, 39.40" (1000mm) long, 0.78" (20mm) high, weighing 3.31 lbs (1.5 kg). The grate has 0.31" (8mm) wide, 3.15" (80mm) long slots and is Class A load rated - for pedestrian foot traffic only. The grate is secured to the body with four point fiX self-locking (snap-on) system. Galvanized steel manufactured and tested according to EN1433 - CE certified.

A15kN SW8/80: V 17010202 (17010203)

