

FILCOTEN[®]
versatile.

FILCOTEN[®] tec offers endless possibilities when comes to installation and application.



HYDRO BG
Sustainable innovation

Hydro BG Inc. USA
134 Boynton Ave
Plattsburgh, NY 12901
USA

Phone: +1 514 932 5445
Fax: +1 514 932 5775

E-Mail: sales@hydrobg.com
Web: www.hydrobg.com

Hydro BG Inc. North America
642 De Courcelle, suite 206
Montreal (QC), H4C 3C5
CANADA

Phone: +1 514 932 5445
Fax: +1 514 932 5775

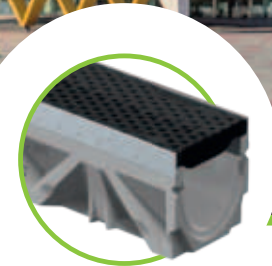
E-Mail: sales@hydrobg.com
Web: www.hydrobg.com



BG 042016 - www.renn-design.de



HYDRO BG
Sustainable innovation.



Commercial trench
drain solution.

FILCOTEN[®] tec

Fibre reinforced concrete trench drain.

« What defines innovative technology? »

Maximum performance and sustainability. »

FILCOTEN[®] tec, like all other BG Graspointer products, combines innovative strength with environmental consciousness.

This environmental connection is longheld tradition for our company. For over 50 years we have relied on engineering made in Austria, to produce technologically advanced and eco-friendly products.



Extremely durable

- Heat, Frost and UV-resistant
- High impact resistance and stability
- High compressive strength
- Lightweight, quick installation
- Non-flammable

Eco-friendly

- No pollutants
- 100% recyclable
- 100% renewable energy for the production
- Will not pollute or harm the environment



For more information look us up at: www.hydrobg.com



HYDRO BG
Sustainable innovation.

Additional safety features for channel & grating:



The **FILCOTEN[®] tec** trench drain system has all the advantages of **FILCOTEN[®]** but with added safety features. Anchoring ribs ensure a secure bonding with the surrounding concrete bed. The trench drain system is resilient up to class E600 (in accordance to DIN 19580).

High-quality:

- solidly built and robust
- resistant to heat and frost
- UV-resistant
- several design variations

Often used in:

- pedestrian areas
- parks
- sports and leisure facilities
- garages and similar surfaces

Channel geometry / surfacing

The flat inner surface of **FILCOTEN[®]** channels are highly crafted making each channel smooth, in order to mini-mize surface friction. This achieves the best possible flow and a superior self-cleaning effect.

Prefabricated sealant groove

Sealant groove for waterproof installations.

COMBee-design grating (class C)

Unique honeycomb and scaled surface structure design with central marking line, makes this grating ideal for modern applications. Hydraulically optimized inlet sections and heel proof for pedestrian areas.

The **FILCOTEN[®]** composite grating is 100 % corrosion resistant, can be fully recycled and is UV, frost and heat resistant.

Galvanised steel rails

The special design of the galvanised steel rails allows for secure grating locking with the fiX self-locking system. Adjacent covering surfaces can easily be attached to the edges of the rails.

Easy installation

Anchoring ribs ensure a secure bond and anchoring of the channel with the surrounding concrete bed.

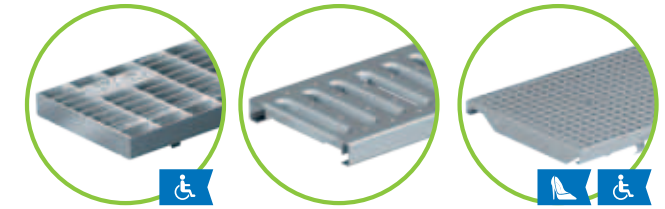
Perfect fit

Intelligently distributed fixing points, both on the inner and outer sides of the rails, guarantees ideal bonding with the **FILCOTEN[®]** material.

Comprehensive product range:

- Catch basin and sediment bucket
- Front/end cap
- No hub bottom outlets
- Rebar support
- Step connector
- Option for protection against vandalism
- Grating variations

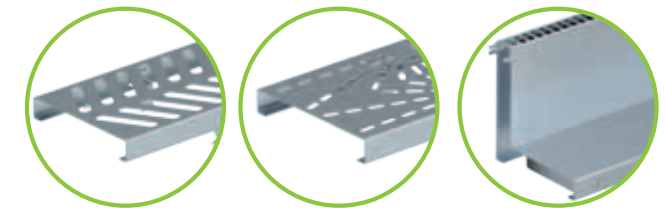
Various grating variations for



Mesh grating cl. B / C

Reinforced slotted grating cl. A or cl. C

Perforated grating cl. A or cl. C



Design grating "Rallye"

Design grating "Rays"

Slot top cl. A or cl. C



Ductile iron longitudinal grating cl. C

Ductile iron longitudinal grating cl. C/D

Ductile iron slotted grating cl. E



Secure fit with: the four-point fiX connection.

The new 'fiX-connection' enables a four-point quick release safety device for the grating. This snap-on system allows for quick and secure mounting.