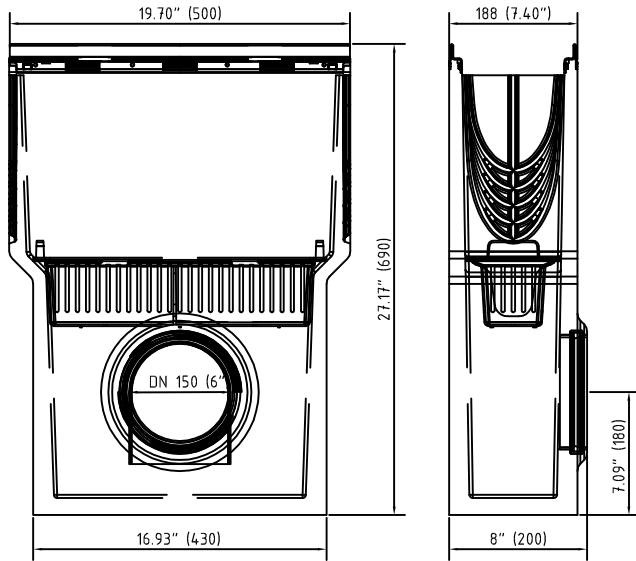


Accessories

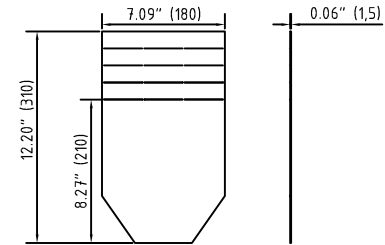
1. Sump unit:
 (optional: Drain trap: 30057
 Silt bucket: 22516)

2. End cap:

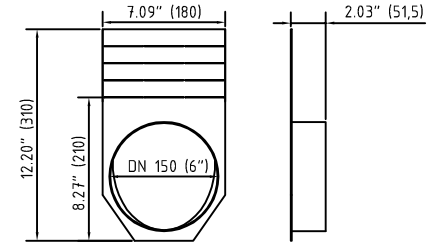
E 10615390



19015215



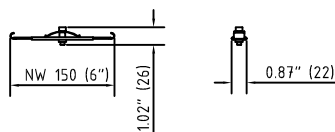
19015216



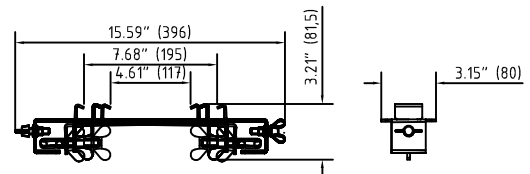
Accessories FILCOTEN® pro – E 150 (6") – heavy duty series

	Item Nno.	Accessories	Material	Weight	
				LBS	kg
<input type="radio"/>	10615390	Catch basin 6" with cast iron rails and 4" outlet with seal	FILCOTEN	98.1 l	44.5
<input type="radio"/>	22516	Sediment bucket for catch basin	plastic	0.66	0.3
<input type="radio"/>	19015215	Front/end cap galvanized steel (for channels 0 up to 20-0)	galvanized	1.10	0.5
<input type="radio"/>	19016206	6" No Hub bottom outlet	galvanized	1.32	0.6
<input type="radio"/>	19015216	6" No Hub end cap outlet	galvanized	1.54	0.7
<input type="radio"/>	19010915	Rebar support	fabricated steel	2.64	1.2
<input type="radio"/>	19015295	Step connector plate NW150 pro 0/10-0/20-0	galvanized	0.44	0.2

3. Anti-vandal locking device 32088:



4. Rebar Support:



* See detailed spec sheets for the Anti-vandal locking device and the Rebar support.