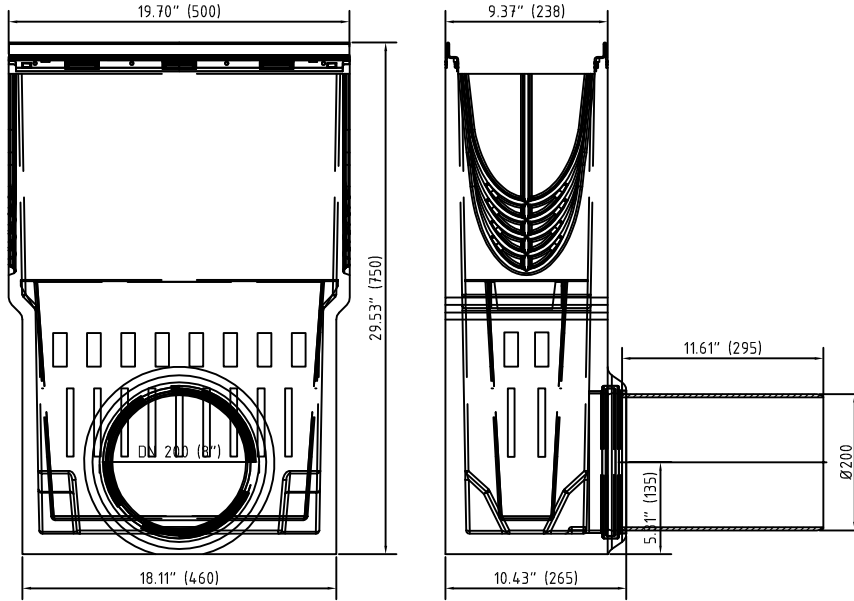


Accessories

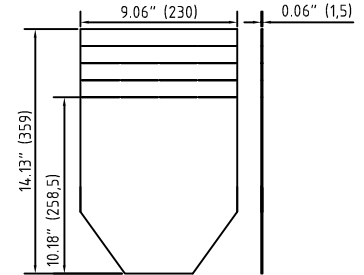
1. Sump unit:
 (optional: Silt bucket: 22512)

E 10620390

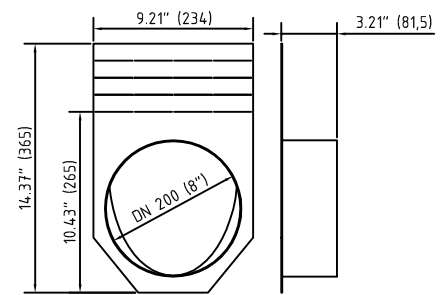


2. End cap:

19020215



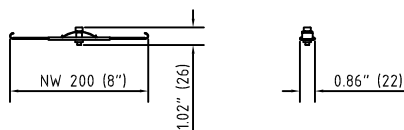
19020216



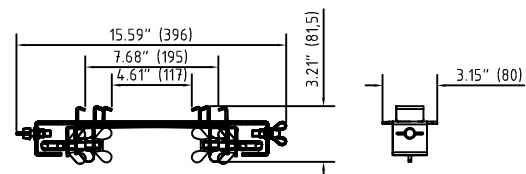
Accessories FILCOTEN® pro – E 200 (8") – heavy duty series

| | Item Nno. | Accessories | Material | Weight | |
|-----------------------|-----------|---|------------|--------|------|
| | | | | LBS | kg |
| <input type="radio"/> | 10620390 | Catch basin 8" with cast iron rails and 8" outlet with seal | FILCOTEN | 105.82 | 48.0 |
| <input type="radio"/> | 22512 | Sediment bucket for catch basin | plastic | 1.54 | 0.7 |
| <input type="radio"/> | 19020215 | Front/end cap galvanized steel (for channels 0 up to 20-0) | galvanized | 1.68 | 0.8 |
| <input type="radio"/> | 19021208 | 8" No Hub bottom outlet | galvanized | 2.20 | 1.0 |
| <input type="radio"/> | 19020216 | 8" No Hub end cap outlet | galvanized | 2.64 | 1.2 |
| <input type="radio"/> | 19020295 | Step connector plate NW200 pro 0/10-0/20-0 | galvanized | 0.50 | 0.23 |
| <input type="radio"/> | 70154 | Pipe connector DN200, L=295mm | plastic | 2.40 | 1.1 |

3. Anti-vandal locking device 32089:



4. Rebar Support:



* See detailed spec sheets for the Anti-vandal locking device and the Rebar support.