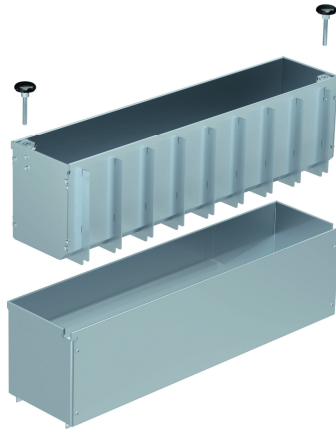


Maintenance unit (Pave Slot Top) - Galvanized steel



Product Features:

- Certified to EN 1433 Load Class C 250 kN 56,200 lbs per foot.
- Suitable to use with (4") NW100 channels.
- Manufactured from galvanized steel.
- Complies with ADA - American Disabilities Act.

Installation:

- The trench drain system and slot tops shall be installed in accordance with the manufacturer's installation instructions and recommendations.

Slot Tops asymmetric FILCOTEN® light/tec/pro 100 (4") - maintenance unit

	Item no.	Gratings	Material	Dimension	Load class as per EN-standard	Slot-/Mesh width	Weight		Inlet cross-section	Inlet cross-section
							Lbs	Kg	sq.inches/m	cm2/m
○	17110281	Maintenance unit SH 110mm	galvanized steel	19.70"/4.84"/5.24" 500/123/133	C 250 kN	SW 0.49" (SW 12.5mm)	11.02	5.0	19.37	125
○	13399	Lifting knobs	steel and plastic	Accessories (2 pieces of lifting knobs for maintenance unit)			0.22	0.1		

Specification: FILCOTEN Pave Slot Top for NW100 trench drains, heavy duty, (Load Class C 250 kN), galvanized steel. The reinforced Slot Top is 4.84" (123mm) wide, 19.70" (500mm) long, 5.24" (133mm) high, 11.02 lbs (5.0 kg) weight. FILCOTEN Pave maintenance unit has the slot 0.49" (12.5mm) wide, and is ADA compliant and Class C - for commercial applications. FILCOTEN Pave Slot Top and maintenance units are suitable to use with nominal width 4" (100mm) trench drains. Recommended minimum 2 maintenance units for a run, and 2 pieces of lifting knobs. Galvanized steel manufactured and tested according to EN1433 - CE certified.

C250kN SW12,5: V 17110281,

