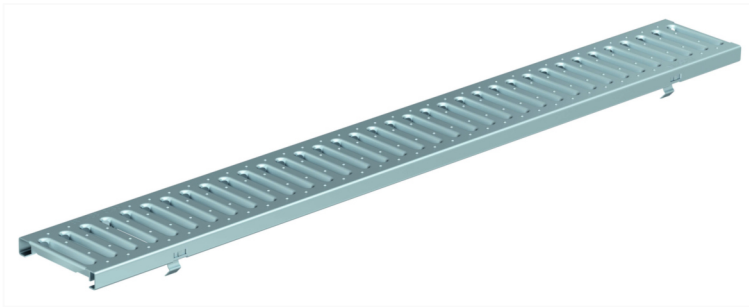


Reinforced slotted grating - Stainless steel



Product Features:

- Certified to EN 1433 Load Class A 15 kN
3,372 lbs
- Uses fiX self-locking system
- Suitable to use with NW100 channels
- Manufactured from Grade 304 (1.4301) stainless steel

Installation:

- The trench drain system and grates shall be installed in accordance with the manufacturer's installation instructions and recommendations

Gratings FILCOTEN® pro – E 100 (4") with fiX self-locking system.

	Item no.	Gratings	Material	Dimension	Load class as per EN-standard	Slot-/Mesh width	Weight		Inlet cross-section sq.inches	Inlet cross-section cm2/m
							Lbs	Kg		
○	17010302	Reinforced slotted grating	stainless steel	39.40"/4.80"/0.78" 1000/122/20	A 15 kN	.31" wide x 3.15" slots (8x80mm)	3.31	1.5	34.88	225
○	17010303	Reinforced slotted grating	stainless steel	19.70"/4.80"/0.78" 500/122/20	A 15 kN	.31" wide x 3.15" slots (8x80mm)	1.76	0.8	34.88	225

Specification: FILCOTEN pro-E NW100, light duty, (Load Class A 15 kN), stainless steel (Type 304), reinforced slotted grate is 4.80" (122mm) wide, 39.40" (1000mm) long, 0.78" (20mm) high, weighing 3.31 lbs (1.5 kg). The grate has 0.31" (8mm) wide, 3.15" (80mm) long slots and is Class A load rated - for pedestrian foot traffic only. The grate is secured to the body with four point fiX self-locking (snap-on) system. Stainless steel manufactured and tested according to EN1433 - CE certified.

A15kN SW 8/80: V 17010202 (17010203)

