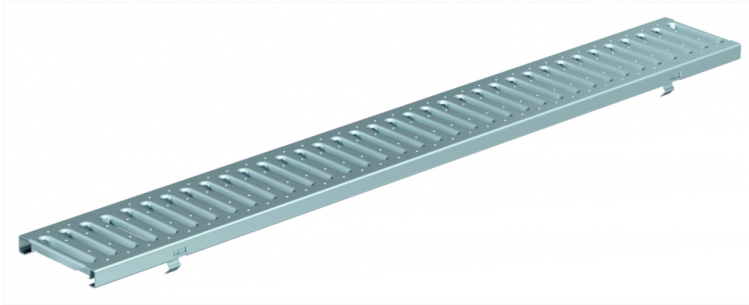


**Reinforced slotted grating - Stainless steel**



**Product Features:**

- Certified to EN 1433 Load Class C 250 kN 56,200 lbs.
- Uses fiX self-locking system.
- Suitable to use with NW100 channels.
- Manufactured from Grade 304 (1.4301) stainless steel

**Installation:**

- The trench drain system and grates shall be installed in accordance with the manufacturer's installation instructions and recommendations.

Gratings FILCOTEN® pro – E 100 (4") with fiX self-locking system.

	Item no.	Gratings	Material	Dimension	Load class as per EN-standard	Slot-/Mesh width	Weight		Inlet cross-section	Inlet cross-section
							Lbs	Kg	sq.inches	cm2/m
○	17010306	Reinforced slotted grating	stainless steel	39.40"/4.80"/0.78" 1000/122/20	C 250 kN	.31" wide x 3.15" slots (8x80mm)	9.92	4.5	42.63	275
○	17010307	Reinforced slotted grating	stainless steel	19.70"/4.80"/0.78" 500/122/20	C 250 kN	.31" wide x 3.15" slots (8x80mm)	4.85	2.2	42.63	275

**Specification:** FILCOTEN pro-E NW100, heavy duty, (Load Class C 250 kN), stainless steel (Type 304), reinforced slotted grate is 4.80" (122mm) wide, 39.40" (1000mm) long, 0.78" (20mm) high, weighing 9.92 lbs (4.5 kg). The grate has 0.31" (8mm) wide, 3.15" (80mm) long slots and is Class C load rated - commercial applications. The grate is secured to the body with four point fiX self-locking (snap-on) system. Stainless steel manufactured and tested according to EN 1433 - CE certified.

C250kN SW 8/80: V 17010206 (17010207)

