

Trench drain mini shallow body with integral stainless steel rails - 39.40" (1000mm) length

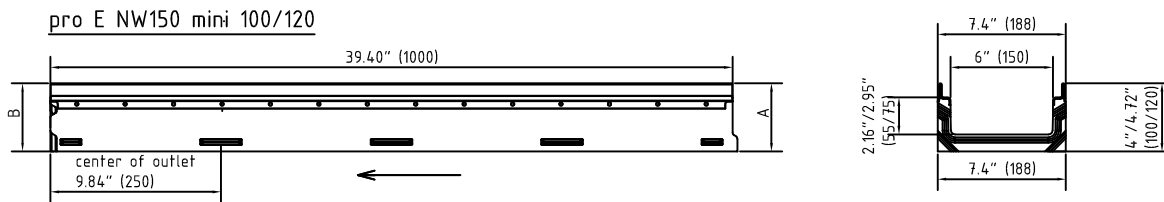
Channel body FILCOTEN® pro – E 150 (6") mini shallow body – heavy duty series

	Body part number			Overall body depth		Maximum flow rate			Weight (less grate)	
	stainless steel rails	Channel type	Slope	A (Min.)	B (Max.)	GPM *)	LPS *)	CFS *)	Lbs	Kg
○	10515302	mini 100	0 %	3.94" (100 mm)	3.94" (100 mm)	34.87	2.20	0.0777	39.24	17.8
○	10515300	mini 120	0 %	4.72" (120 mm)	4.72" (120 mm)	57.06	3.60	0.1271	44.09	20.0
○	10515301	mini 170	0 %	6.69" (170 mm)	6.69" (170 mm)	106.20	6.70	0.2366	52.47	23.8

*) GPM = Gallons per minute, LPS = Liters per second, CFS = Cubic feet per second

SPECIFICATION: FILCOTEN pro-E NW150 mini shallow, 7.4" (188mm) wide, 39.40" (1000mm) long, 3.94"/4.72"/6.69" (100/120/170mm) height, neutral FILCOTEN trench drain system. Body is manufactured from a fibre-reinforced concrete based material. Bodies have interlocking ends, a radiused extract for efficient liquid drainage and a multiple anchoring ribs to securely hold the body into the concrete foundation. Each body is manufactured with an integral 0.16" (4mm) thick, heavy duty stainless steel rails. Bottom outlets are available in 4"/6" (100/150mm) No Hub bottom outlet connections. Grate options include heavy duty stainless steel, galvanized steel and ductile iron (load class A - E). Grates are secured to the body with a four point self-locking system. End caps are also available.

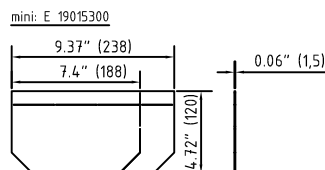
FUNCTION: Used in commercial areas such as factories, warehouses, parking garages, car dealerships, gas stations, public and residential areas, parks, sports complexes, town squares, railway stations and cycle and foot paths. Ideal for environmentally sensitive areas because the body channels are free of resins, heavy metals, VOC and chemicals. Exceptional adhesion to surrounding concrete foundation due to the concrete composition of the body channels - resulting in a monolithic all concrete installation. Less breakage during transport and installation due to impact resistant, fibre-reinforced, UV resistant concrete material. Extra heavy duty integral cast iron rail allows for extra heavy duty commercial solid tire traffic patterns, hard wheel traffic applications.



Accessories FILCOTEN® pro – E 150 (6") mini shallow – heavy duty series

	Item Nno.	Accessories	Material	LBS	kg
○	19015300	Front/end cap mini stainless steel	stainless steel	0.66	0.3
○	19011204	4" No Hub bottom outlet	galvanized	0.66	0.3
○	19016206	6" No Hub bottom outlet	galvanized	1.32	0.6

1) Mini shallow trench drain can be connected with 4" / 6" No Hub bottom outlet



MATERIALS: Channels shall be manufactured from Filcoten fiber composite with concrete edge cast iron rail. Minimum properties of Filcoten fiber composite will be as follows:

Compressive strength: 11700 PSI
 Flexural strength: 1700 PSI
 Free of release agents: YES
 Water absorption sufficient for adhesion with concrete surfaces: YES

Non flammable: YES
 U/V resistant: YES
 Recyclable 100%: YES
 Dilute acid and alkali resistant: YES
 Frost thaw salt tested as per EN1433 with a test temperature up to -40°C (-40°F): YES
 Material free of VOC, biocides, heavy metals: YES