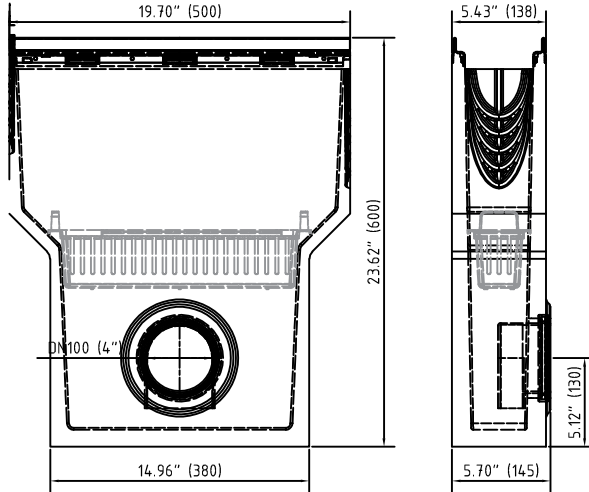


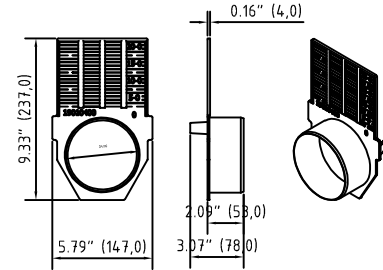
Accessories

1. Sump unit: 10610392
 (including: Silt bucket: 22515)

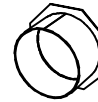
E 10610390



2. Front/End cap: 19010400



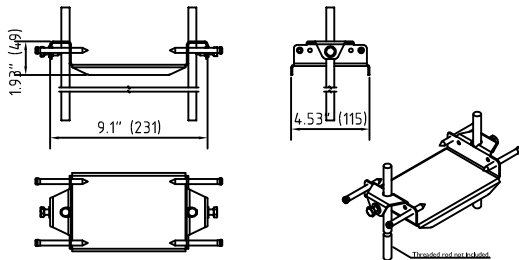
3. No Hub bottom outlet: 19011304



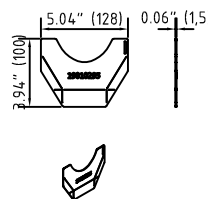
Accessories FILCOTEN® pro – E 100 (4") – heavy duty series

	Item Nno.	Accessories	Material	Weight	
				LBS	kg
<input type="radio"/>	10610392	Catch basin 4" (100mm) KIT with stainless steel rails and 4" (100mm) outlet with seal, including the sediment bucket	FILCOTEN	71.87	32.6
<input type="radio"/>	19010400	Front/end cap	plastic	0.26	0.1
<input type="radio"/>	19011304	4" No Hub bottom outlet	galvanized	0.66	0.3
<input type="radio"/>	19010915	Rebar support	fabricated steel	2.64	1.2
<input type="radio"/>	19010295	Step connector NW100 pro 0/10-0/20-0	galvanized	0.22	0.1
<input type="radio"/>	32087	Anti-vandalism locking device NW 100		0.22	0.1

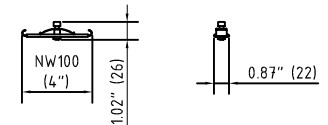
4. Installation support: 19010902



5. Step connector: 19010925



6. Anti-vandal locking device: 32087



* See detailed spec sheets for the Anti-vandal locking device and the Rebar support.