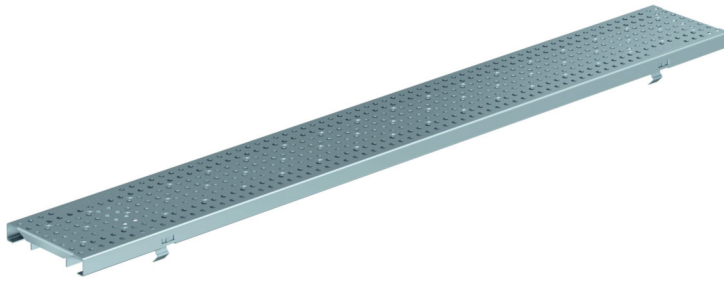


HEELPROOF Perforated grating - Stainless steel - 17015328 / 17015329



Product Features:

- Certified as per European standard EN 1433
- Load Class C 250 kN - 56,200 lbs.
- Uses fiX self-locking system.
- Suitable to use with NW150 channels.
- Manufactured from Grade 304 (1.4301) Stainless steel
- Heelproof
- Complies with ADA - American Disabilities Act.
- Suitable to use with Anti-vandalism device to prevent theft.

Installation:

- The trench drain system and grates shall be installed in accordance with the manufacturer's installation instructions and recommendations.

Gratings FILCOTEN® pro – v 150 (6") with fiX self-locking system.

	Item no.	Gratings	Material	Dimension	Load class as per EN-standard	Slot-/Mesh width	Weight		Inlet cross-section sq.inches/m	Inlet cross-section cm2/m
							Lbs	Kg		
○	17015328	ADA HEELPROOF Perforated grating	Stainless steel	39.40"/6.77"/0.78" 1000/172/20	C 250 kN	Ø 1/4" hole (6,0 mm)	14.95	6.8	37.85	244
○	17015329	ADA HEELPROOF Perforated grating	Stainless steel	19.70"/6.77"/0.78" 500/172/20	C 250 kN	Ø 1/4" hole (6,0 mm)	7.72	3.5	37.85	244

Specification: FILCOTEN pro-E NW150, heavy duty, (Load Class C 250 kN), stainless steel (Type 304), reinforced grate is 6.77" (172mm) wide, 39.40" (1000mm) long, 0.78" (20mm) high, weighting 14.95 lbs (6.78 kg). The grate has Ø1/4" (6mm) diameter hole and is ADA compliant, Heelproof and Class C load rated - commercial applications. The grate is secured to the body with four point fiX self-locking (snap-on) system. Stainless steel manufactured and tested according to EN1433 - CE certified.

C250kN d6: E 17015328 (17015329)

