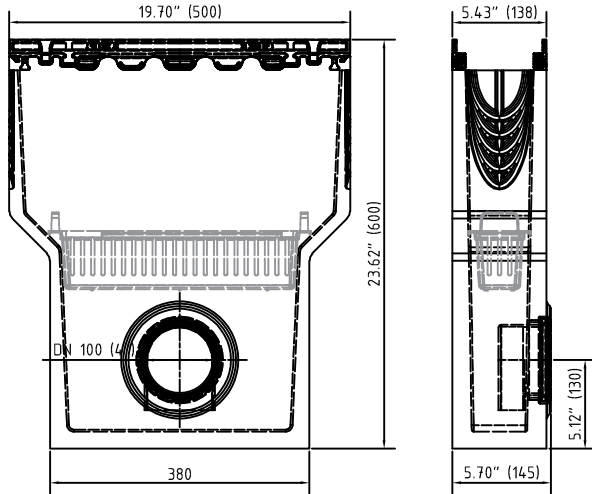


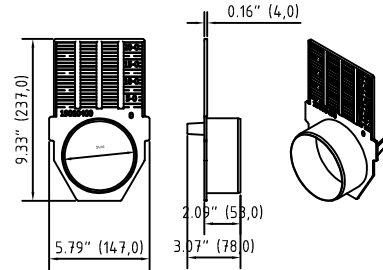
**Accessories**

1. Sump unit: 10610192  
 (including: Silt bucket: 22515)

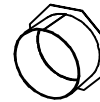
G 10610190



2. Front/End cap: 19010400



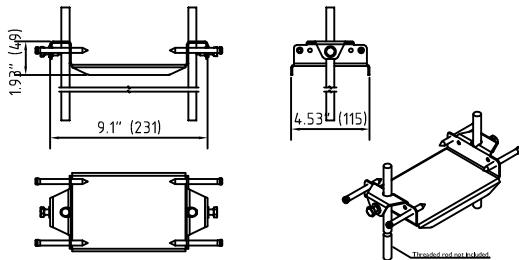
3. No Hub bottom outlet: 19011204



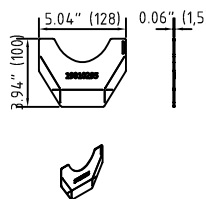
**Accessories FILCOTEN® pro – G 100 (4") – extra heavy duty series**

	Item Nno.	Accessories	Material	Weight	
				LBS	kg
○	10610192	Catch basin 4" KIT with cast iron rails and 4" outlet with seal, including sediment bucket	FILCOTEN	72.77	33.0
○	19010400	Front/end cap	plastic	0.26	0.1
○	19010204	4" No Hub bottom outlet	galvanized	0.66	0.3
○	19010902	Rebar support	galvanized	1.32	0.6
○	19010295	Step connector NW100 pro 0/10-0/20-0	galvanized	0.22	0.1

4. Installation support: 19010902



5. Step connector: 19010925



\* See detailed spec sheet for the Rebar support.