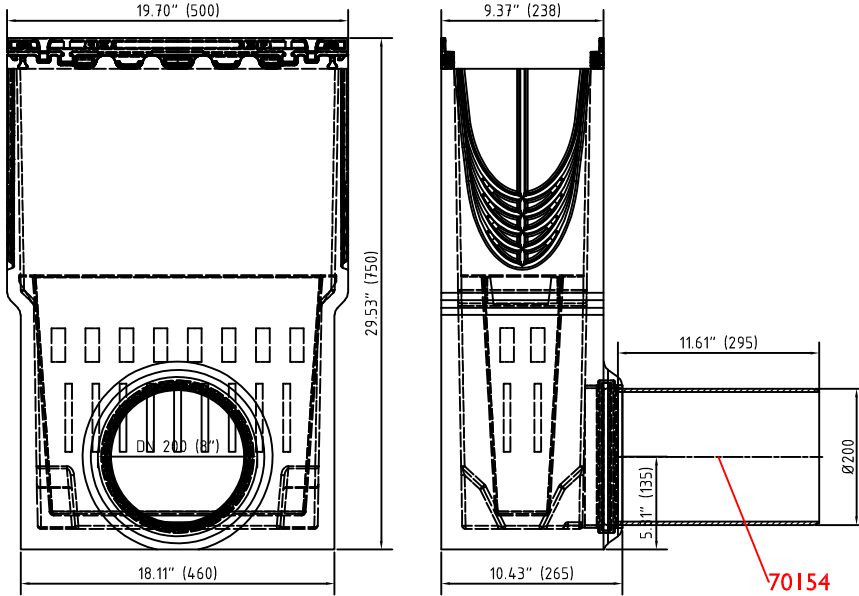


**Accessories**

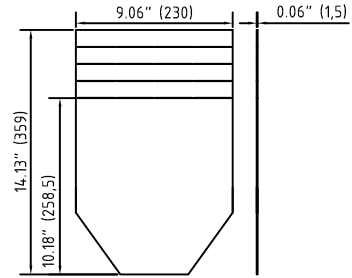
1. Sump unit:  
 (optional: Silt bucket: 22512)

G 10620190

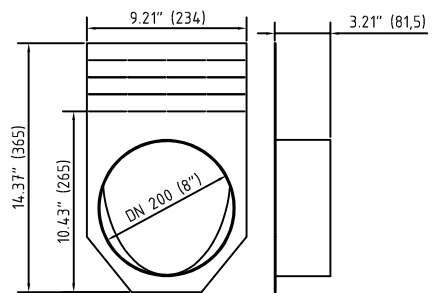


2. End cap:

19020215



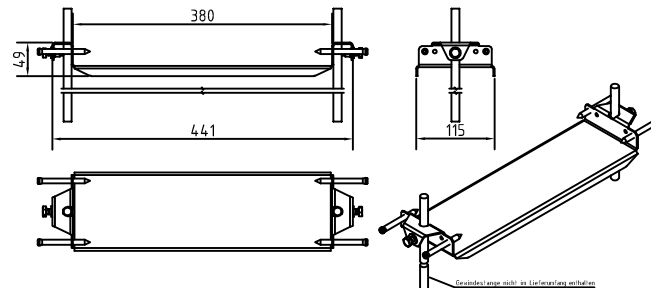
19020216



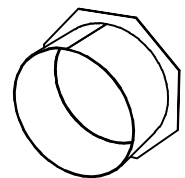
**Accessories FILCOTEN® pro – G 200 (8") – extra heavy duty series**

	Item Nno.	Accessories	Material	Weight	
				LBS	kg
<input type="radio"/>	10620190	Catch basin 8" with cast iron rails and 8" outlet with seal	FILCOTEN	106.70	48.4
<input type="radio"/>	22512	Sediment bucket for catch basin	plastic	1.54	0.7
<input type="radio"/>	19020215	Front/end cap galvanized steel (for channels 0 up to 20-0)	galvanized	1.68	0.8
<input type="radio"/>	19020330	Front/end cap stainless steel	stainless steel	1.68	0.8
<input type="radio"/>	19020216	8" No Hub end cap outlet	galvanized	2.64	1.2
<input type="radio"/>	19021208	8" No Hub bottom outlet	galvanized	2.20	1.0
<input type="radio"/>	19020902	Rebar suport	fabricated steel	2.64	1.2
<input type="radio"/>	19020295	Step connector plate NW200 pro 0/10-0/20-0	galvanized	0.50	0.2
<input type="radio"/>	70154	Pipe connector DN200, L=295mm	plastic	2.40	1.1

3. Rebar Support 19020902:



4. Bottom outlet 19021208:



\* See detailed spec sheets for the Anti-vandal locking device and the Rebar support.