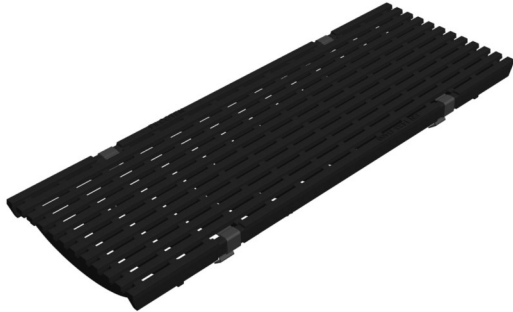


HEELPROOF Ductile iron grating "VIA"



Product Features:

- Certified as per European standard EN 1433
- Load Class D 400 kN (89,920 lbs per foot)
- Uses fiX self-locking system
- Suitable to use with NW150 channels
- Manufactured from ductile iron
- Heelproof
- Complies with ADA - American Disabilities Act.
- Suitable to use with Anti-vandalism device to prevent theft.

Installation:

- The trench drain system and grates shall be installed in accordance with the manufacturer's installation instructions and recommendations.



Gratings FILCOTEN® pro 150 (6") with fiX self-locking system.

	Item no.	Gratings	Material	Dimension	Load class as per EN-standard	Slot-/Mesh width	Weight		Inlet cross-section sq.inches/m	Inlet cross-section cm2/m
							Lbs	Kg		
○	17015184	HEELPROOF grating "VIA"	ductile iron	19.70"/6.77"/0.78" 500/172/20	D 400 kN	SW 1.41" x 0.23" (SW29x6mm)	12.78	5.8	79.8	515

Specification: FILCOTEN pro NW150, extra heavy duty, Load Class D 400 kN, ductile iron, reinforced grate is 6.77" (172mm) wide, 19.70" (500mm) long, 0.78" (20mm) high, weighing 12.78 lbs (5.8 kg). The grate has 1.41"x0.25" (29x6mm) wide slots and is ADA compliant, Heelproof and Class D load rated - for pneumatic forklift traffic, roads and highways. The grate is secured to the body with four point fiX self-locking (snap-on) system. Ductile iron manufactured and tested according to EN1433 - CE certified.

D400kN SW6.4mm: GJS 17015183

