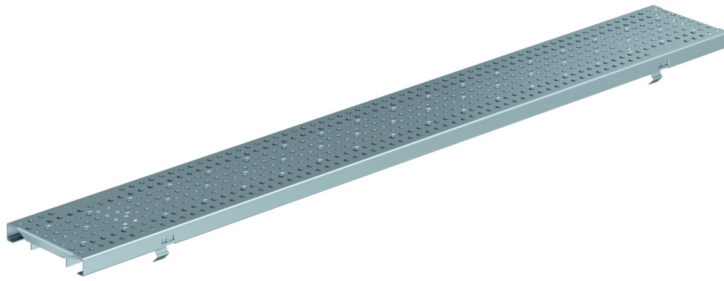


HEELPROOF Perforated grating - Galvanized steel - 17015228 / 17015229



Product Features:

- Certified as per European standard EN 1433
- Load Class C 250 kN 56,200 lbs.
- Uses fiX self-locking system.
- Suitable to use with NW150 channels.
- Manufactured from galvanized steel
- Hot-Dip galvanized material.
- HEELPROOF
- Complies with ADA - American Disabilities Act.
- Suitable to use with Anti-vandalism device to prevent theft.

Installation:

- The trench drain system and grates shall be installed in accordance with the manufacturer's installation instructions and recommendations.

Gratings FILCOTEN® pro – v 150 (6") with fiX self-locking system.

| | Item no. | Gratings | Material | Dimension | Load class as per EN-standard | Slot-/Mesh width | Weight | | Inlet cross-section | Inlet cross-section |
|---|----------|----------------------------------|------------------|-----------------------------------|-------------------------------|----------------------|--------|-----|---------------------|---------------------|
| | | | | | | | Lbs | Kg | sq.inches/m | cm2/m |
| ○ | 17015228 | ADA HEELPROOF Perforated grating | galvanized steel | 39.40"/6.77"/0.78" 1000/172/20 | C 250 kN | Ø 1/4" hole (6,0 mm) | 14.95 | 6.8 | 37.85 | 244 |
| ○ | 17015229 | ADA HEELPROOF Perforated grating | galvanized steel | 19.70"/6.77"/0.78" 500/172/20 | C 250 kN | Ø 1/4" hole (6,0 mm) | 7.72 | 3.5 | 37.85 | 244 |

Specification: FILCOTEN pro NW150, heavy duty, (Load Class C 250 kN), galvanized steel, reinforced grate is 6.77" (172mm) wide, 39.40" (1000mm) long, 0.78" (20mm) high, weighting 14.95 lbs (6.78 kg). The grate has Ø1/4" (6mm) diameter hole and is ADA compliant, Heelproof and Class C load rated - commercial applications. The grate is secured to the body with four point fiX self-locking (snap-on) system. Galvanized steel manufactured and tested according to EN1433 - CE certified.

C250kN d6: V 17015228 (17015229)

