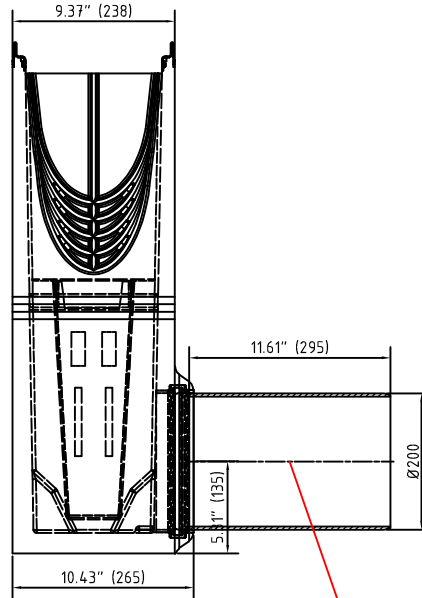
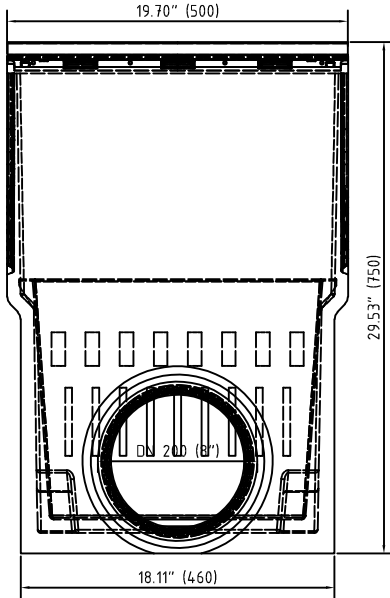


Accessories

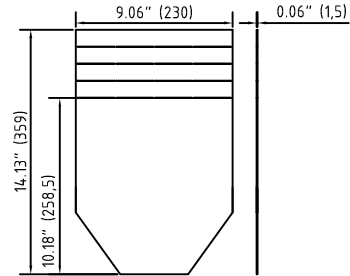
1. Sump unit:
 (optional: Silt bucket: 22512)

V 10620290

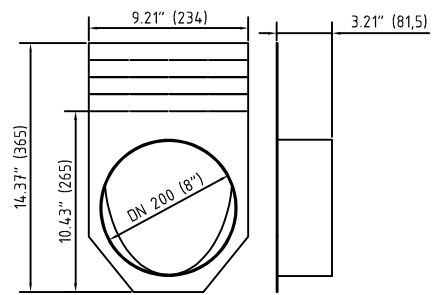


2. End cap:

V 19020215



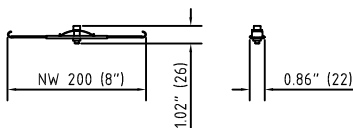
V 19020216



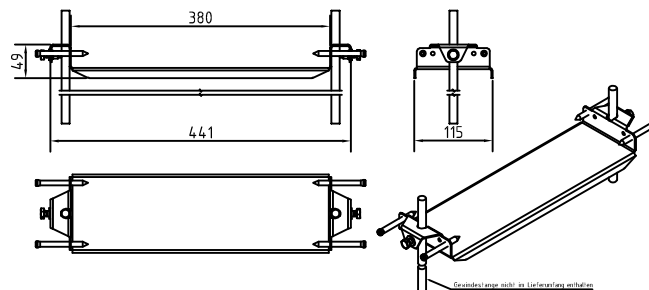
Accessories FILCOTEN® pro – V 200 (8") – heavy duty series

	Item Nno.	Accessories	Material	Weight	
				LBS	kg
○	10620290	Catch basin 8" with galvanized rails and 8" outlet with seal	FILCOTEN	105.82	48.0
○	22512	Sediment bucket for catch basin	plastic	1.54	0.7
○	19020215	Front/end cap galvanized steel (for channels 0 up to 20-0)	galvanized	1.68	0.8
○	19020216	8" No Hub end cap outlet	galvanized	2.64	1.2
○	19021208	8" No Hub bottom outlet	galvanized	2.20	1.0
○	19020902	Installation chair	fabricated steel	1.78	0.8
○	19020295	Step connector plate NW200 pro 0/10-0/20-0	galvanized	0.50	0.2
○	70154	Pipe connector DN200, L=295mm	plastic	2.40	1.1
○	32089	Anti-vandalism locking device NW 200		0.22	0.1

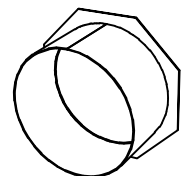
3. Anti-vandal locking device 32089:



4. Rebar Support 19020902:



5. Bottom outlet 19021208:



* See detailed spec sheets for the Anti-vandal locking device and the Rebar support.