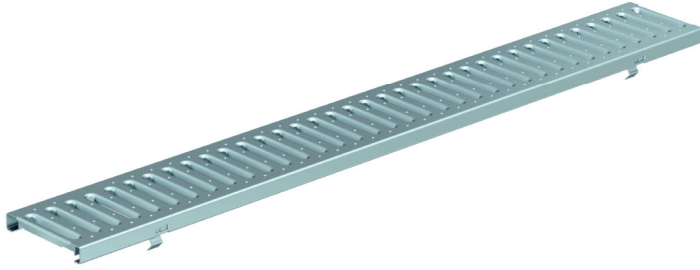


Reinforced slotted grating - Galvanized steel



Product Features:

- Certified as per European standard EN 1433
- Load Class A 15 kN 3,372 lbs per foot.
- Uses fiX self-locking system.
- Suitable to use with NW100 channels.
- Manufactured from galvanized steel
- Hot-Dip galvanized material.

Installation:

- The trench drain system and grates shall be installed in accordance with the manufacturer's installation instructions and recommendations.

Gratings FILCOTEN® pro-tec – v 100 (4") with fiX self-locking system.

	Item no.	Gratings	Material	Dimension	Load class as per EN-standard	Slot-/Mesh width	Weight		Inlet cross-section	Inlet cross-section
							Lbs	Kg	sq.inches/m	cm2/m
○	17010202	Reinforced slotted grating	galvanized steel	39.40"/4.80"/0.78" 1000/122/20	A 15 kN	.31" wide x 3.15" slots (8x80mm)	3.31	1.5	34.88	225
○	17010203	Reinforced slotted grating	galvanized steel	19.70"/4.80"/0.78" 500/122/20	A 15 kN	.31" wide x 3.15" slots (8x80mm)	1.76	0.8	34.88	225

Specification: FILCOTEN pro-tec NW100, light duty, (Load Class A 15 kN), galvanized steel, reinforced grate is 4.80" (122mm) wide, 39.40" (1000mm) long, 0.78" (20mm) high, weighing 3.31 lbs (1.5 kg). The grate has 0.31" (8mm) wide, 3.15" (80mm) long slots and is Class A load rated - for pedestrian foot traffic only. The grate is secured to the body with four point fiX self-locking (snap-on) system. Galvanized steel manufactured and tested according to EN1433 - CE certified.

A15kN SW8/80: V 17010202 (17010203)

