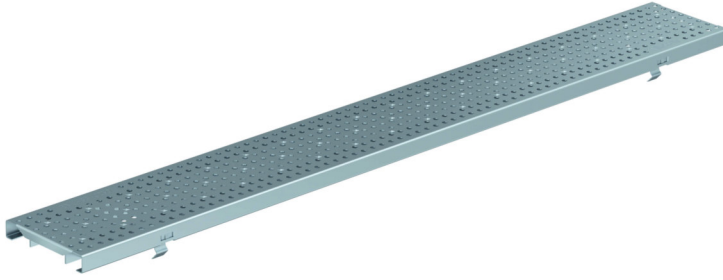


Perforated grating - Galvanized steel



Product Features:

- Certified as per European standard EN 1433
- Load Class A 15 kN 3,372 lbs.
- Uses fiX self-locking system.
- Suitable to use with NW100 channels.
- Manufactured from galvanized steel
- Hot-Dip galvanized material.
- Complies with ADA - American Disabilities Act.
- Suitable to use with Anti-vandalism device to prevent theft.

Installation:

- The trench drain system and grates shall be installed in accordance with the manufacturer's installation instructions and recommendations.

Gratings FILCOTEN® pro-tec – v 100 (4") with fiX self-locking system.

	Item no.	Gratings	Material	Dimension	Load class as per EN-standard	Slot-/Mesh width	Weight		Inlet cross-section	Inlet cross-section
							Lbs	Kg	sq.inches/m	cm2/m
○	17010204	ADA HEELPROOF Perforated grating	galvanized steel	39.40"/4.80"/0.78" 1000/122/20	A 15 kN	Ø 1/4" hole (6,0 mm)	4.19	1.9	20.77	134
○	17010205	ADA HEELPROOF Perforated grating	galvanized steel	19.70"/4.80"/0.78" 500/122/20	A 15 kN	Ø 1/4" hole (6,0 mm)	2.2	1.0	20.77	134

Specification: FILCOTEN pro-tec NW100, light duty, (Load Class A 15 kN), galvanized steel, reinforced grate is 4.80" (122mm) wide, 39.40" (1000mm) long, 0.78" (20mm) high, weighing 4.19 lbs (1.9 kg). The grate has Ø1/4" (6mm) diameter hole and is ADA compliant, Heelproof and Class A load rated - for pedestrian foot traffic only. The grate is secured to the body with four point fiX self-locking (snap-on) system. Galvanized steel manufactured and tested according to EN1433 - CE certified.

A15kN d6: V 17010204 (17010205)

