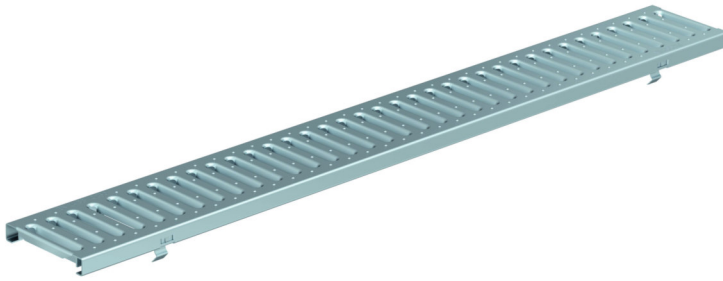


**Reinforced slotted grating - Galvanized steel**



**Product Features:**

- Certified as per European standard EN 1433
- Load Class C 250 kN 56,200 lbs per foot.
- Uses fiX self-locking system.
- Suitable to use with NW100 channels.
- Manufactured from galvanized steel
- Hot-Dip galvanized material.

**Installation:**

- The trench drain system and grates shall be installed in accordance with the manufacturer's installation instructions and recommendations.

Gratings FILCOTEN® pro-tec – v 100 (4") with fiX self-locking system.

	Item no.	Gratings	Material	Dimension	Load class as per EN-standard	Slot-/Mesh width	Weight		Inlet cross-section sq.inches/m	Inlet cross-section cm2/m
							Lbs	Kg		
○	17010206	Reinforced slotted grating	galvanized steel	39.40"/4.80"/0.78" 1000/122/20	C 250 kN	.31" wide x 3.15" slots (8x80mm)	9.92	4.5	42.63	275
○	17010207	Reinforced slotted grating	galvanized steel	19.70"/4.80"/0.78" 500/122/20	C 250 kN	.31" wide x 3.15" slots (8x80mm)	4.85	2.2	42.63	275

**Specification:** FILCOTEN pro-tec NW100, heavy duty, (Load Class C 250 kN), galvanized steel, reinforced grate is 4.80" (122mm) wide, 39.40" (1000mm) long, 0.78" (20mm) high, weighing 9.92 lbs (4.5 kg). The grate has 0.31" (8mm) wide, 3.15" (80mm) long slots and is Class C load rated - commercial applications. The grate is secured to the body with four point fiX self-locking (snap-on) system. Galvanized steel manufactured and tested according to EN1433 - CE certified.

C250kN SW8/80: 17010206 (17010207)

