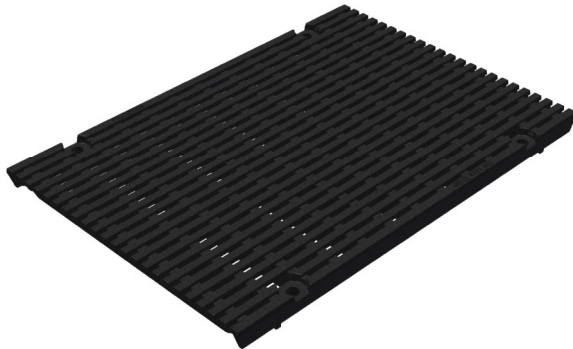


**HEELPROOF Ductile iron grating "VIA"**



**Product Features:**

- Certified to EN 1433
- Load Class D 400 kN (89,920 lbs per foot)
- Uses four point bolting system
- Suitable to use with NW300 channels
- Manufactured from ductile iron
- Heelproof
- Complies with ADA - American Disabilities Act.

**Installation:**

- The trench drain system and grates shall be installed in accordance with the manufacturer's installation instructions and recommendations.

**Gratings FILCOTEN® pro 300 (12") with 4-point bolting.**

	Item no.	Gratings	Material	Dimension	Load class as per EN-standard	Slot-/Mesh width	Weight		Inlet cross-section	Inlet cross-section	
							Lbs	Kg	sq.inches/m	section section	
										cm2/m	
○	17030184	HEELPROOF grating "VIA"	ductile iron	19.70"/13.62"/0.98" 500/346/25	D 400 kN	SW 1.41" x 0.23" (SW29x6mm)	38.58	17.5	153.4	990	
○	32110	Bolts/nuts kit for class D ductile iron grating (4 pcs. required for 500mm grating)							0.2		

**Specification:** FILCOTEN pro NW300, extra heavy duty, Load Class D 400 kN, ductile iron, reinforced grate is 13.62" (346mm) wide, 19.70" (500mm) long, 0.98" (25mm) high, weighing 38.58lbs (17.5 kg). The grate has 1.41"x0.23" (29x6mm) mesh width and is ADA compliant, Heelproof and Class D load rated - for pneumatic forklift traffic, roads and highways. The grate is secured to the body with four point bolting system. Ductile iron manufactured and tested according to EN1433 - CE certified.

D400kN SW29x6mm: GJS 17030184

