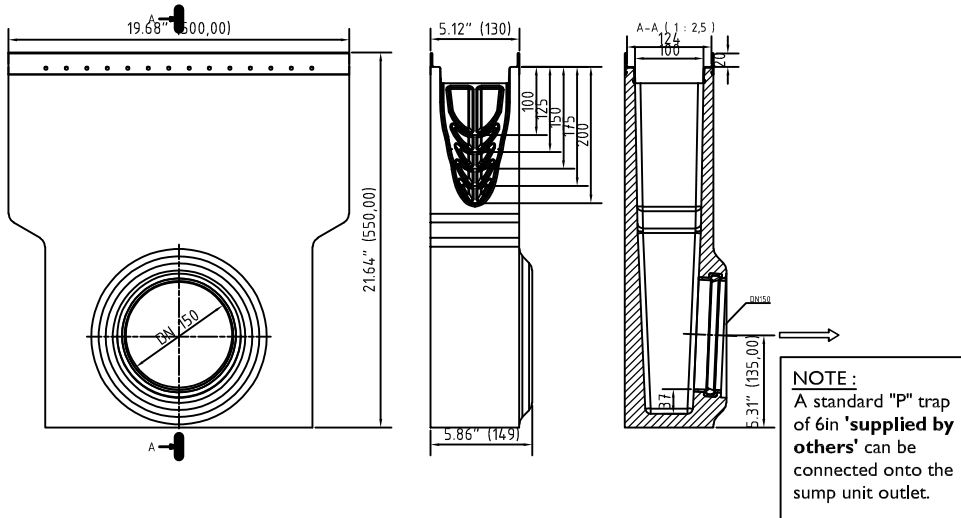


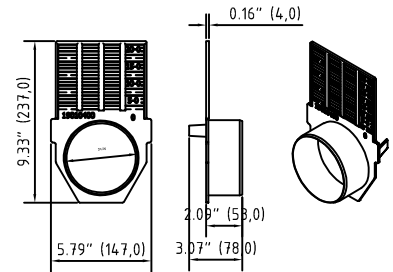
Accessories

1. Sump unit: 10410294
 (including: Sediment bucket: 22515)

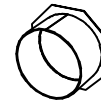
V 10410292



2. Front/End cap: 19010400



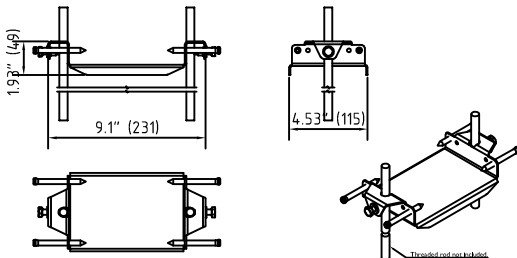
3. No Hub bottom outlet: 19011204



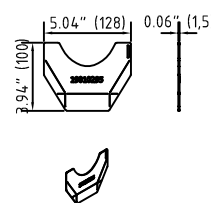
Accessories BG-FILCOTEN tec V – 100 (4")

	Item no.	Accessories	Material	Weight	
				LBS	kg
<input type="radio"/>	10410294	Catch basin V, KIT, 500/148/550 with pipe coupling DN 150, including sediment bucket	FILCOTEN	65.70	29.8
<input type="radio"/>	19010400	Front/end cap	plastic	0.26	0.1
<input type="radio"/>	19011204	4" No Hub bottom outlet	galvanized	0.66	0.3
<input type="radio"/>	19010902	Installation support	fabricated steel	1.37	0.6
<input type="radio"/>	19010295	Step connector NW100 pro 0/10-0/20-0	galvanized	0.22	0.1
<input type="radio"/>	32087	Anti-vandalism locking device NW 100	Stainless steel	0.22	0.1

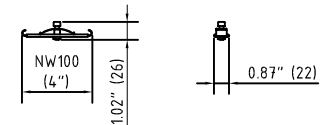
4. Installation support: 19010902



5. Step connector: 19010295



6. Anti-vandal locking device: 32087



* See detailed spec sheet for the Anti-vandal locking device and Installation support.